

# 2010 CCFOA Presentation



## “Kicking Game Mechanics

# Agenda

- Definitions
  - Free Kicks
  - On-Side Free Kicks
  - Scrimmage Kicks
  - Scoring Kicks
- Mechanics & Coverage
- Communication Between Officials

# Definitions

- Free Kicks
- On-Side Free Kicks

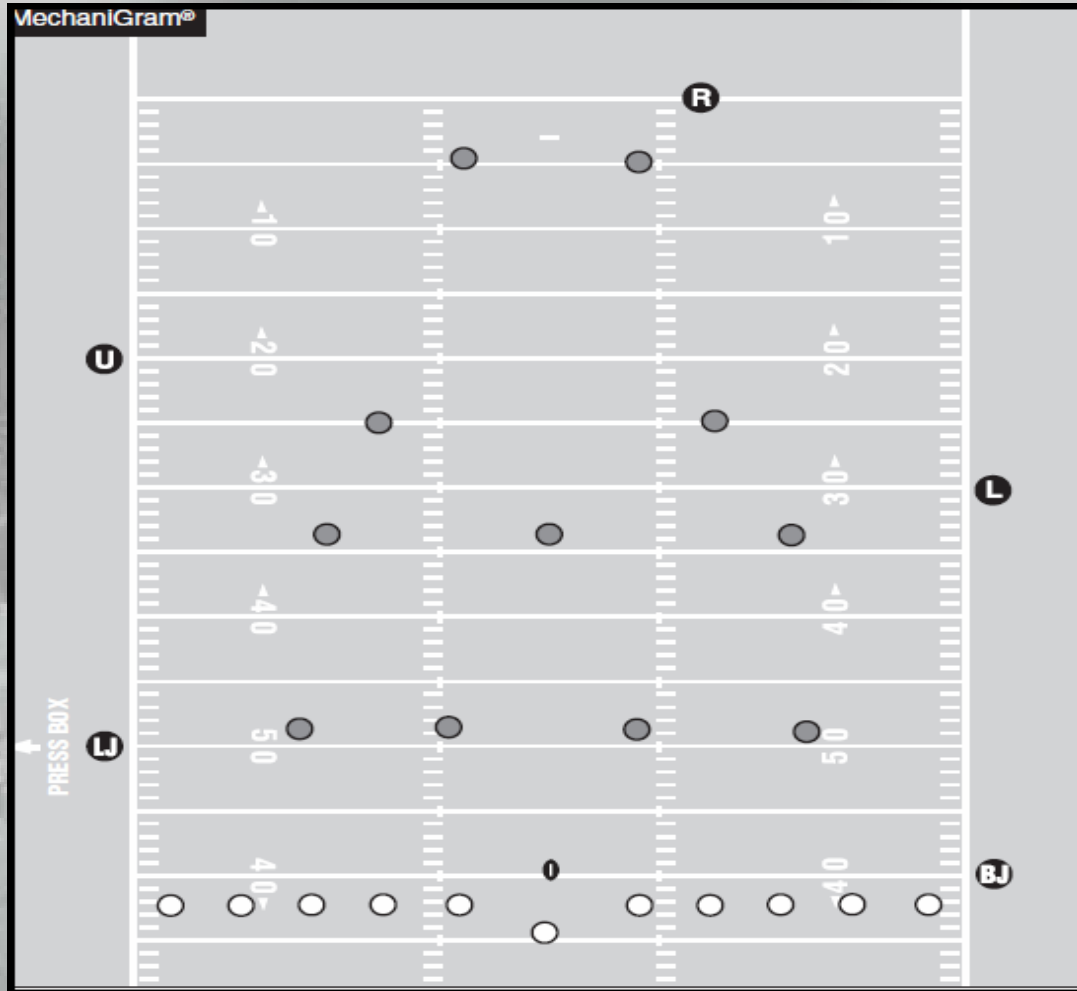
# Definitions

- Scrimmage Kicks
- Scoring Kicks

# Definitions

- Fair Catch
- First Touching

# Free Kick Mechanics

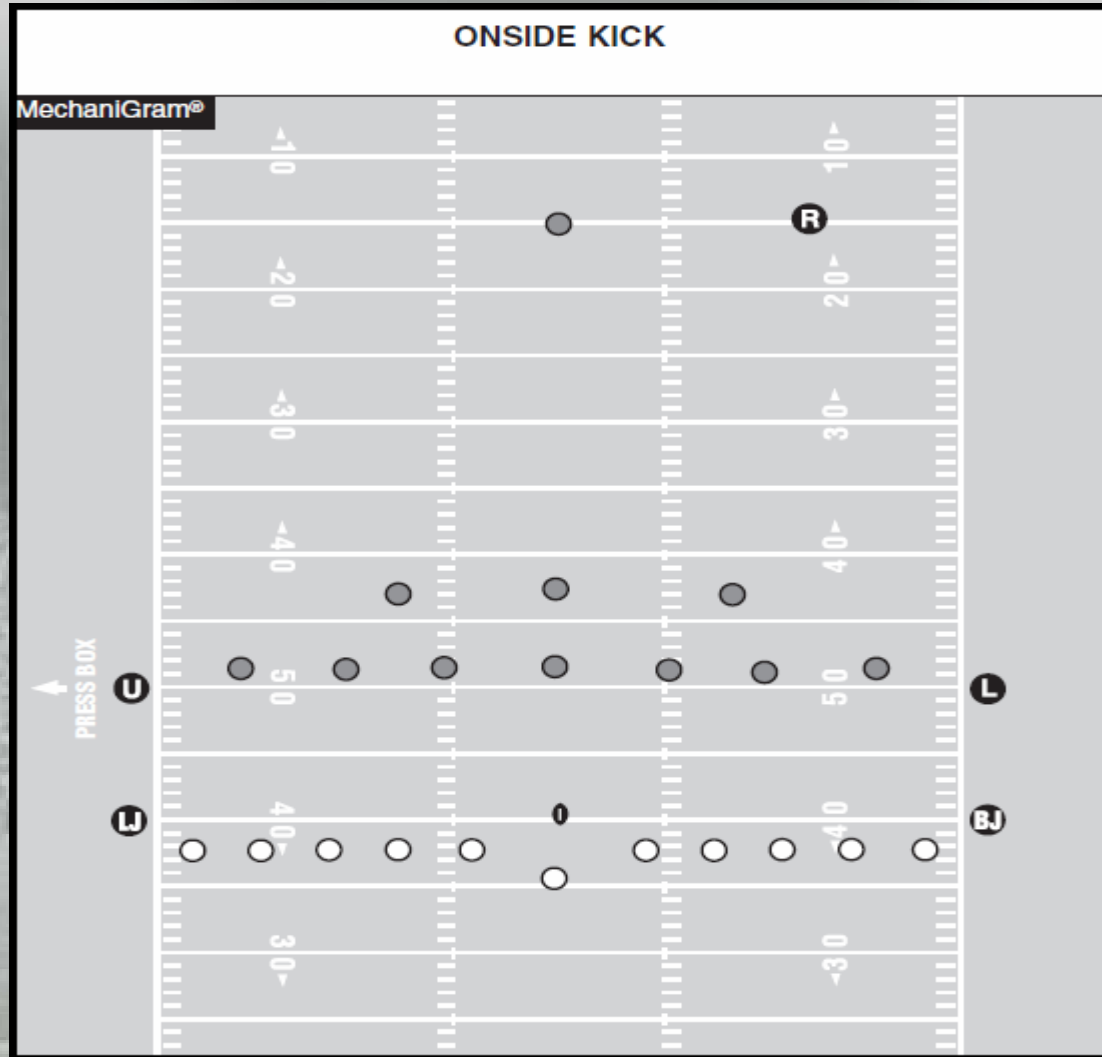


# Free Kick Mechanics

- **Referee:** Starting position is on the side of the field on which the chains are stationed, near the hashmark on team R's goalline. Once he sees a ready signal from each official, the referee blows his whistle and gives the ready for play signal.
- **Umpire:** Starting position is on the side opposite the chains, at about team R's 20 yardline. When in position and ready for the kick, the umpire should raise an arm as a ready signal for the referee.
- **Linesman:** Starting position is on the side of the field opposite the umpire, on team R's 30 yardline. When in position and ready for the kick, the linesman should raise an arm as a ready signal for the referee.
- **Line judge:** The line judge comes to the top of the numbers on his side of the field once the players are on the field. After identifying team R's free kick line, the line judge reminds team R that all blocks must be above the waist. The back judge and line judge turn toward each other, ensure that the other is ready, then simultaneously jog off to their sidelines; the line judge is on team R's restraining line. When in position and ready for the kick, the line judge should raise an arm as a ready signal for the referee.
- **Back judge:** The back judge moves simultaneously toward the center of the field once the players are on the field. The back judge should not give the ball to the kicker until team K has 11 players on the field and should remind the kicker not to kick the ball until the referee has sounded his whistle. After identifying team K's free kick line, the back judge turns toward the line judge. After ensuring that the other is ready, they simultaneously jog off to their sidelines; the back judge is on team K's restraining line. When in position and ready for the kick, the back judge should raise an arm as a ready signal for the referee. If the football falls or blows off tee just prior to free kick, the back judge sounds whistle to prevent action and moves to kicker to give instructions.



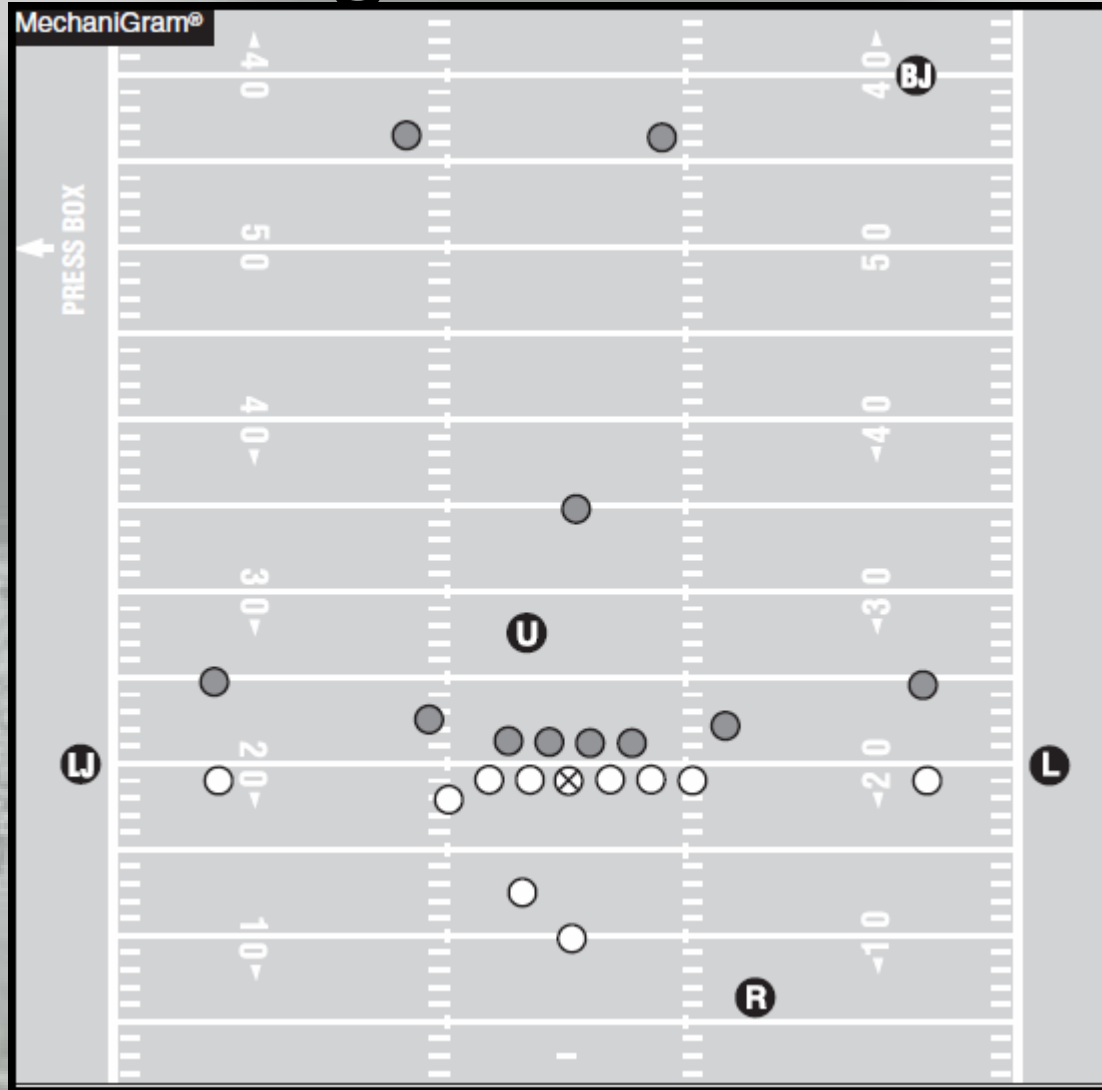
# On Sides Mechanics



# On Sides Mechanics

- **Referee:** Starting position is on the side of the field opposite the chains, deeper than the deepest receiver.
- **Umpire:** Starting position is on team R's restraining line opposite the linesman.
- **Linesman:** Starting position is the normal position on team R's restraining line opposite the umpire.
- **Line judge:** Starting position is the normal position on team K's restraining line opposite the umpire.
- **Back judge:** Starting position is the normal position on team K's restraining line opposite the line judge. The back judge should be prepared to blow his whistle if the ball blows off the tee.

# Scrimmage Kick Mechanics

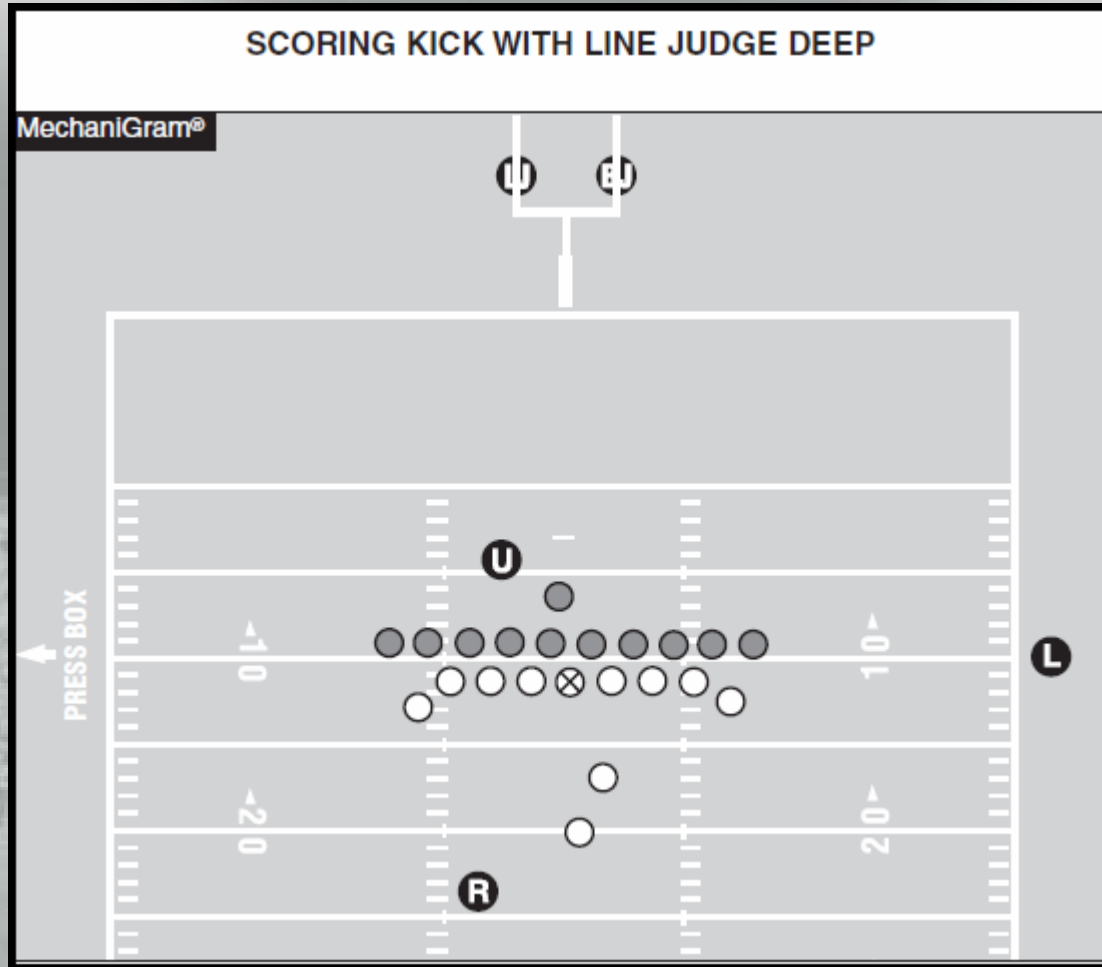


# Scrimmage Kick Mechanics

- **Referee:** The referee's position is three to five yards outside the tight end and two to three yards behind the kicker, on kicking-leg side. That position allows the referee to view the snap as well as the action around the kicker before, during and after the kick. The referee must be ready to move in the appropriate direction if an errant snap leads to a loose ball in the offensive backfield.
- **Umpire:** The umpire's position is seven to 10 yards deep and favoring the line judge's sideline. Favoring the line judge's side compensates for the line judge moving downfield immediately at the snap.
- **Linesman and line judge:** The wing officials' starting position on scrimmage kicks is the same as for other plays from scrimmage.
- **Back judge:** The back judge begins the play seven to 10 to 12 yards wider than and two to three yards behind the deepest receiver on the linesman's side of the field. The back judge must be prepared to move up field if the kick is short or downfield if the receiver has to retreat.



# Scoring Kick Mechanics



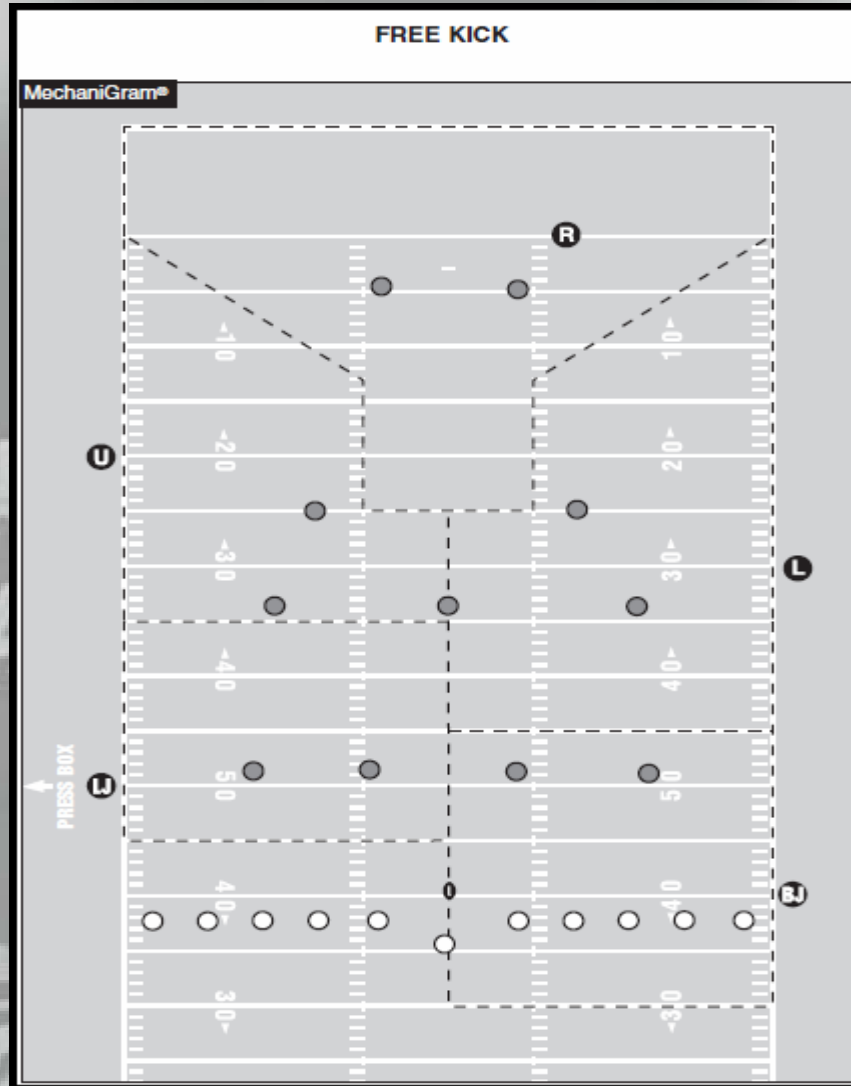
# Scoring Kick Mechanics

- **Referee:** Starting position is three to five yards behind and 10 yards wide of potential kicker, facing holder.
- **Umpire:** Starting position is five to seven yards behind team R's line and opposite the referee.
- **Linesman:** Because the referee has his back to the line judge's sideline, starting position is on the line off the sideline.
- **Line judge:** Because the referee has his back to the line judge's sideline, starting position is behind the goalpost and beyond the endline on his side of the field.
- **Back judge:** Starting position is beyond the endline and behind the upright on the linesman's side.

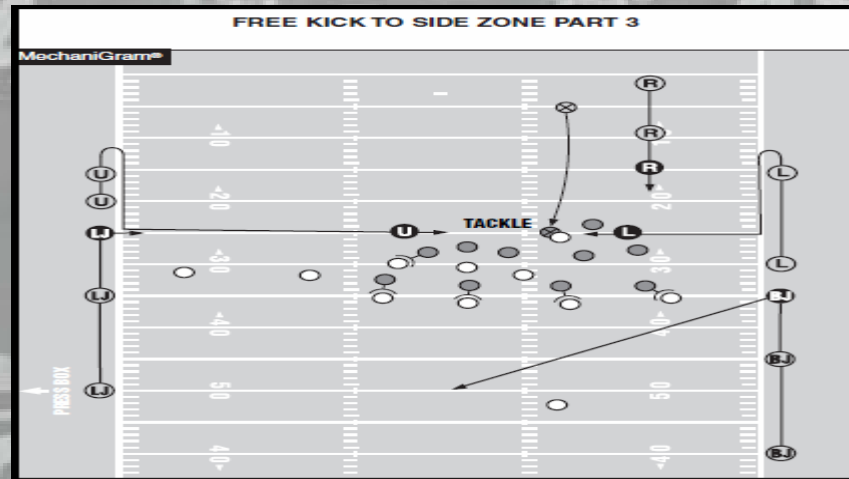
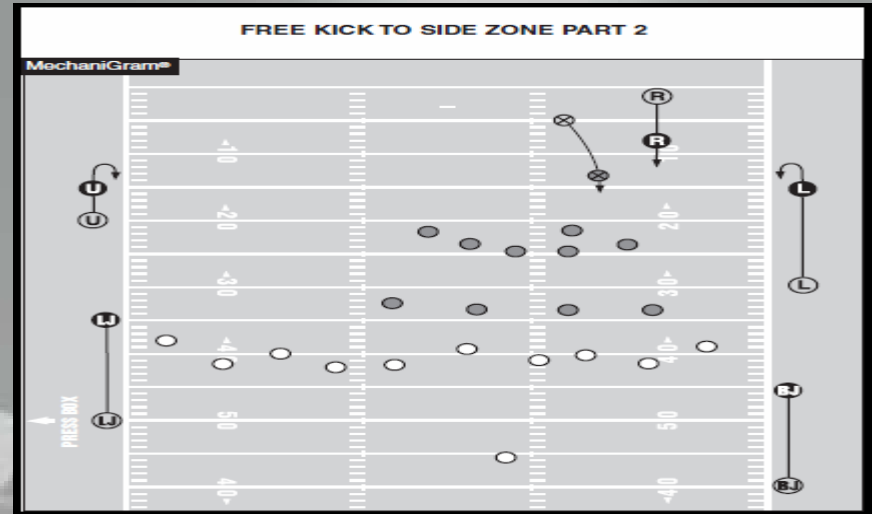
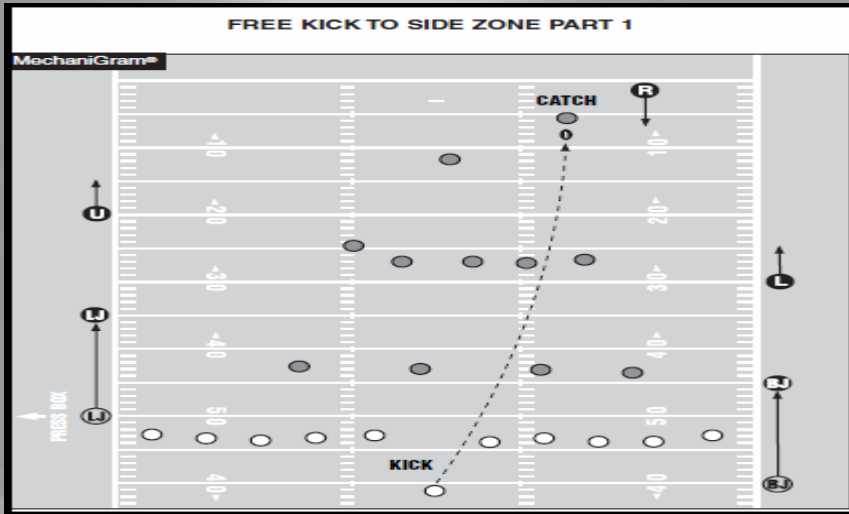
# Mechanics & Coverage

- Who's got ball responsibility?
- Who's watching blocks?
- Whose responsibility is it to see if the ball is kicked into the ground on a free kick?
- Who's winding the clock?
- Fair catch – how do we officiate a play differently with a fair catch signal given?

# Mechanics & Coverage



# Mechanics & Coverage



# Communication Between Officials

- During Pregame
- Before a Kick
- “Bracketing” the Kick

# Recap

- Free Kicks
- On-Side Free Kicks
- Scrimmage Kicks
- Scoring Kicks
- Mechanics & Coverage
- Communication Between Officials



Thank you for your attention!

**Have a great season!!**

